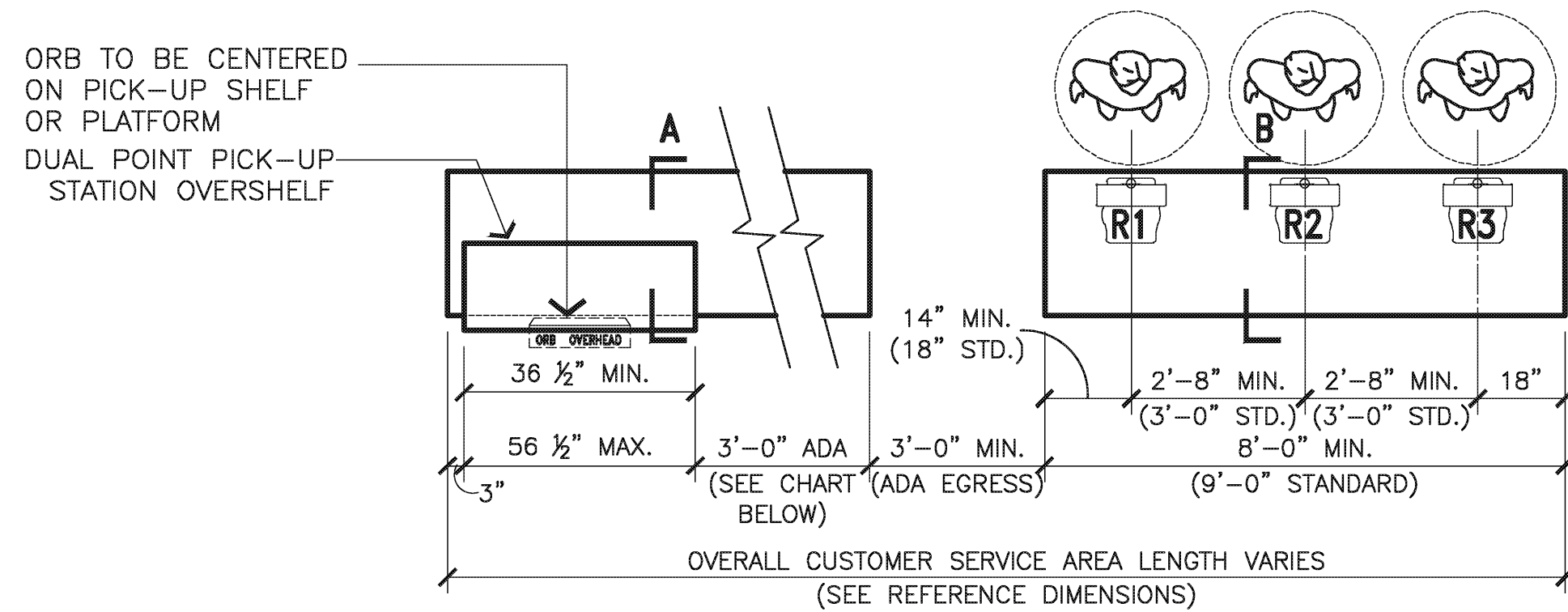
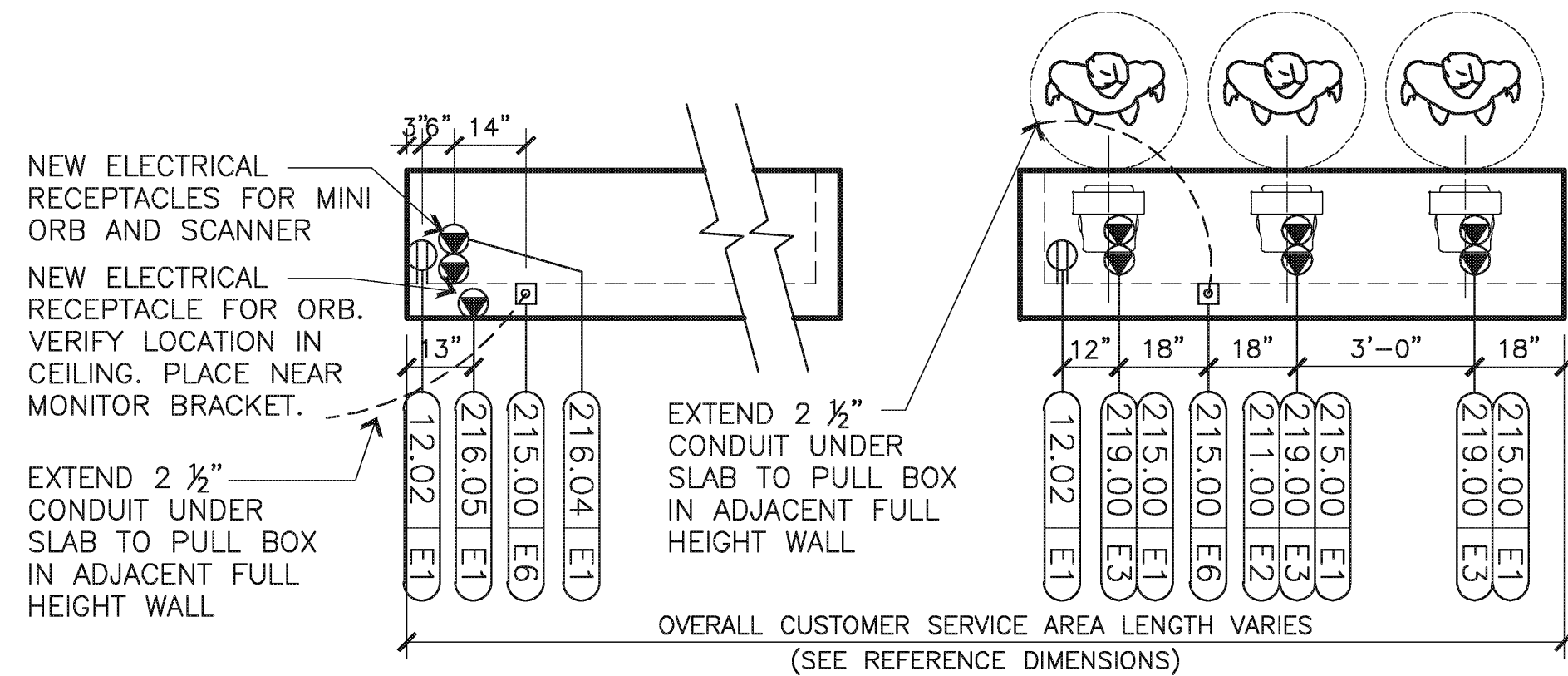


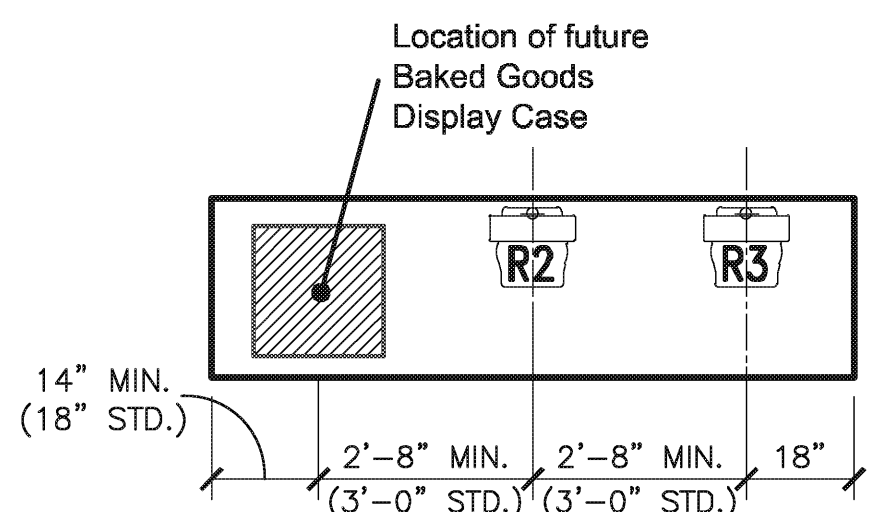
1 FRONT COUNTER (CUSTOMERS SIDE)
N.T.S.



2 EQUIPMENT PLAN LAYOUT
N.T.S.



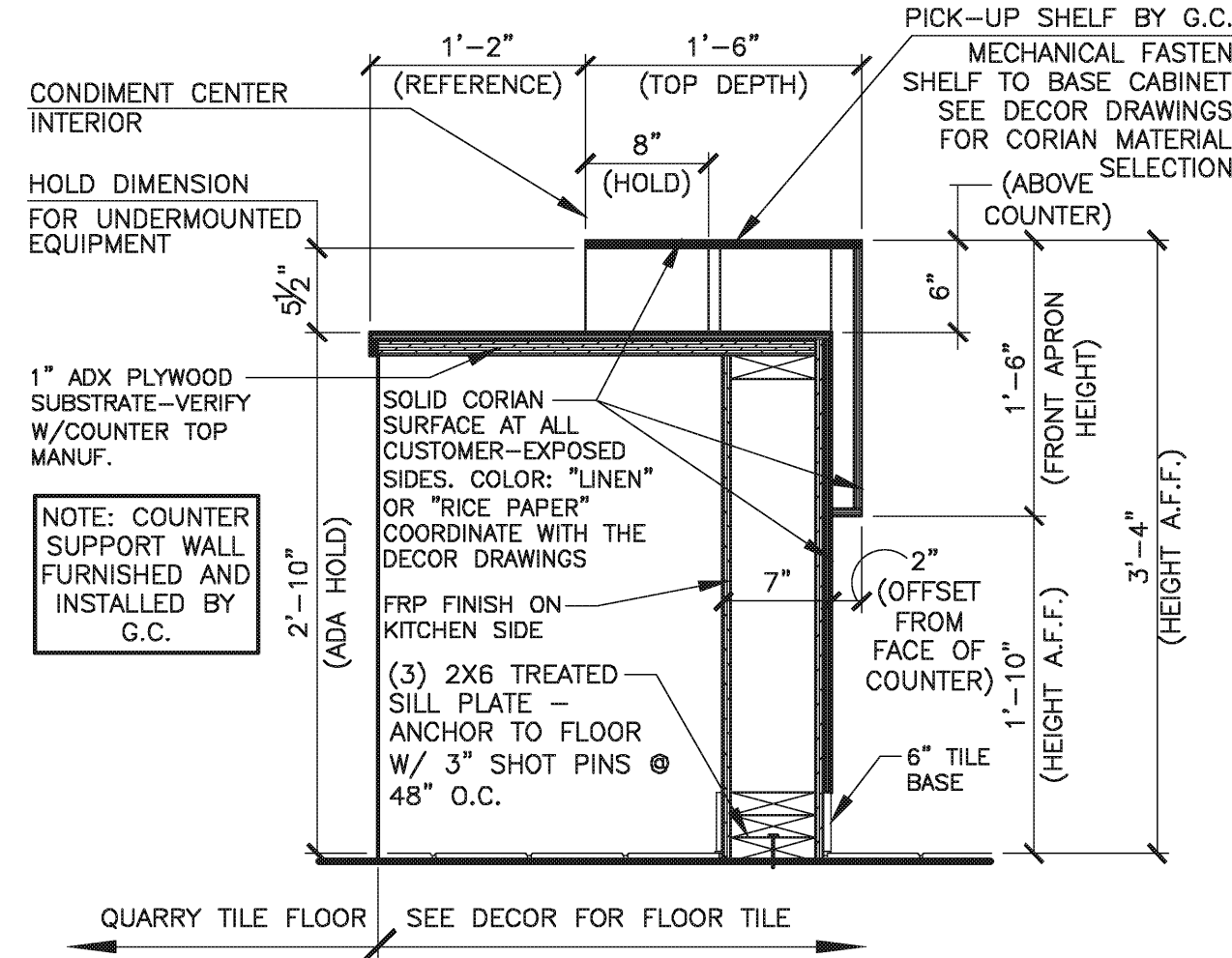
3 ELECTRICAL ROUGH-IN PLAN
N.T.S.



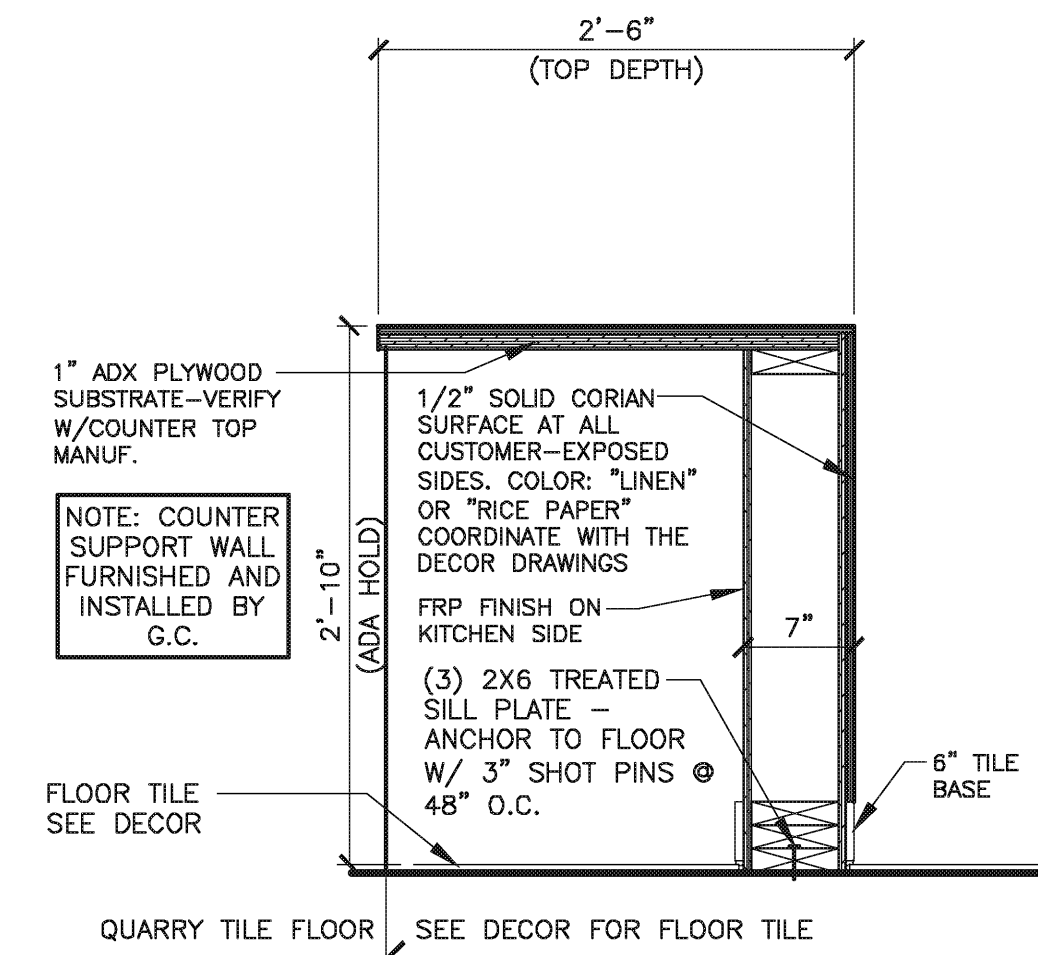
4 FUTURE BAKED GOODS DEPLOYMENT
N.T.S.

THIS DRAWING IS
FOR REFERENCE ONLY

THE LAYOUTS SHOWN MAY NOT MATCH SITE SPECIFICS
THIS DESIGN CRITERIA SHOULD BE INCORPORATED
INTO SITE SPECIFIC DRAWING SETS



A PICK-UP SHELF SECTION
SCALE: N.T.S.



B ORDER COUNTER SECTION
SCALE: N.T.S.

SPLIT FRONT COUNTER SLIP-SHEET & FUTURE READY FOR BAKED GOODS

ELITE CONSTRUCTION GROUP
LAKE JACKSON, TX
PHONE: 979-285-0712
NOTE: THESE PRINTS HAVE BEEN
REDUCED BY 50 PERCENT. SCALE
WILL BE 50 PERCENT OF WHAT IS
NOTED ON PLANS

PB = Pullbox
JB = Junction Box
EC = Electrical Contractor

VIF = Verify in Field

ELECTRICAL SCHEDULE

TAG #	QTY	DESCRIPTION	VOLT/PH	FLA	BRK SIZE	COND/WIRE	PNL/CCT	RECEP TYPE	HGT AFF	REQUIREMENTS & REMARKS
012.02E1	2	BAKED GOODS DISPLAY CASE	120/1	2.5	15A	1/2" C-2#12	AP-3:1	5-15R	2'-0"	-
211.00E2	2	DELIVERY TABLET	120/1 ISOLATED	1.5	20A	1/2" C-2#12IG	CP:4	SEE RMKS	SEE RMKS	TABLET LOCATED AT FRONT COUNTER UNTIL FULL POS INTEGRATION. POWER FROM SAME RECT. AS 219.00E10 VIA TWIST-LOCK ADAPTER PROVIDED WITH UNIT. PROVIDE ADDITIONAL IG5262 RECT. WITHIN ASSEMBLY AREA FOR TABLET, IG5262 RECEPTACLE TO BE USED ONCE FULL POS INTEGRATION IS COMPLETE. COORDINATE EXACT LOCATION IN FIELD.
215.00E1	3	POS REGISTER - FRONT COUNTER	120/1 ISOLATED	3.0 EA.	20A	1/2" C-2#12IG	CP:19	IG4700	2'-0"	EC TO RUN 3/4" COND IN WALL FOR FLUSH MTD SPCL. RECEP FOR KEYSTATIONS (MONITOR,CPU & CASH DRAWERS)
215.00E6	2	POS REGISTER - FRONT COUNTER	DATA CABLE	-	-	-	-	4x4x4 PB	1'-2"	EXTEND 2 1/2" CONDUIT UNDER SLAB TO 215.00E7 FOR POS DATA CABLES
216.04E1	1	ORB MONITOR (MINI)/SCANNER	120/1 ISOLATED	1.5 EA.	20A	1/2" C-2#12IG	CP:4	(2) IG4700	2'-0"	-
216.05E1	1	ORB MONITOR	120/1 ISOLATED	1.5 EA.	20A	1/2" C-2#12IG	CP:4	IG4700	FLUSH ON CLG	-
219.00E3	3	POS - RECEIPT PRINTER/CASHLESS	120/1 ISOLATED	0.7	20A	1/2" C-2#12IG	CP:4	IG4700	2'-0"	-

- ELECTRICAL SCHEDULE NOTES:
- CIRCUIT NUMBERS SHOWN ARE FOR DESIGN INTENT ONLY. ACTUAL CONDITIONS WILL AFFECT CIRCUITRY.
 - WHEN AVAILABLE ONLY ONE BAKED GOODS CASE WILL BE PROVIDED PER RESTAURANT.

FRONT COUNTER - REFERENCE DIMENSIONS										
A	B	C	D	E	F	G	H	I	J	K
Overall Counter Service Area in Feet	Overall Customer Service Area in inches	Pick Up Shelf or Flat Counter	Gap to Overshelf	Pick-Up Shelf Width	Pick-Up ADA Width	Pick-Up counter Length in Inches	Left End of Counter to Register on Center	Register to Register on Center	Right End of Counter to Register on Center	Order Counter Length in Inches
>15'-0"	>180"	Flat Counter	N/A	N/A	48"	48"	14"	32"	18"	96"
>16'-0"	>192"	Flat Counter	N/A	N/A	48"	48"	18"	36"	18"	108"
>17'-0"	>204"	Flat Counter	N/A	N/A	60"	60"	18"	36"	18"	108"
>18'-0"	>216"	Pick Up Shelf	N/A	N/A	72"	72"	18"	36"	18"	108"
>19'-0"	>228"	Pick Up Shelf	3"	36.5"	44.5"	84"	18"	36"	18"	108"
>20'-0"	>240"	Pick Up Shelf	3"	56.5"	36.5"	96"	18"	36"	18"	108"

Standard Pick Up Shelf Lengths are 36.5, 46.5" & 56.5". Using the chart below as a starting point, extra inches should be accounted for by using the following steps:

- Increase the Order Counter Length up to 9'-0" Standard.
 - If possible, increase the Pick Up Shelf size to the next increment. The Pick-Up ADA Width can be decreased to accommodate this change, but must be a minimum of 36"
 - Increase the ADA Egress Width
- If there is another means of ADA egress near the front counter, the counter cut may be reduced to 28"



PROJECT	PROJECT	REVISION	DATE ISSUED	BY
SPLIT FRONT COUNTER STANDARD	EXISTING SEEQ RETROFIT	-	6/19/2017	USRD
CONSTRUCTION DOCUMENT SLIP SHEET				

These drawings and specifications are the confidential and proprietary property of McDonald's USA, LLC and shall not be copied or reproduced without written authorization. The contract documents were prepared for use on this specific site in conjunction with its issue date and are not suitable for use on a different site or at a later time. Use of these drawings for reference or example on another project requires the services of properly licensed architects and engineers. Reproduction of the contract documents for reuse on another project is not authorized.